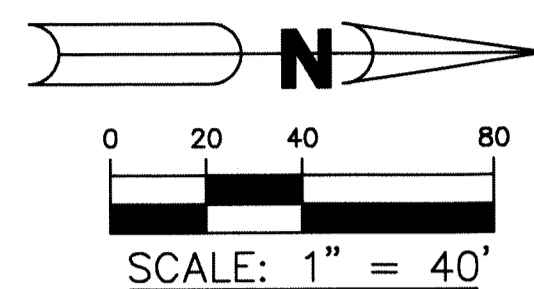


BURLINGTON SELF STORAGE OF LAKE WORTH NO.2

A REPLAT OF A PORTION OF TRACT 13, PLAT OF SEC. 36-T.44 S. R.42 E., RECORDED IN PLAT BOOK 3 PAGE 10, AND A REPLAT OF TRACT A, BURLINGTON SELF STORAGE OF LAKE WORTH, RECORDED IN PLAT BOOK 127, PAGE 156, PUBLIC RECORDS OF PALM BEACH COUNTY, FLORIDA, LYING IN THE SOUTHWEST QUARTER (S.W. 1/4), OF THE SOUTHWEST QUARTER (S.W. 1/4) OF SECTION 36, TOWNSHIP 44 SOUTH, RANGE 42 EAST, PALM BEACH COUNTY, FLORIDA

SHEET 2 OF 2



LEGEND:

- SYMBOLS:**
- PERMANENT REFERENCE MONUMENT (P.R.M.), SET 4"x4" CONCRETE MONUMENT WITH DISK STAMPED "LB6473"
 - PERMANENT REFERENCE MONUMENT (P.R.M.), FOUND 4"x4" CONCRETE MONUMENT WITH DISK STAMPED "LB6473"
 - MONUMENT, SET 1/2" IRON ROD WITH "BROWN & PHILLIPS" CAP
 - SET MAG NAIL WITH DISK STAMPED "PRM LB6473", UNLESS NOTED OTHERWISE

STATE PLANE COORDINATES:

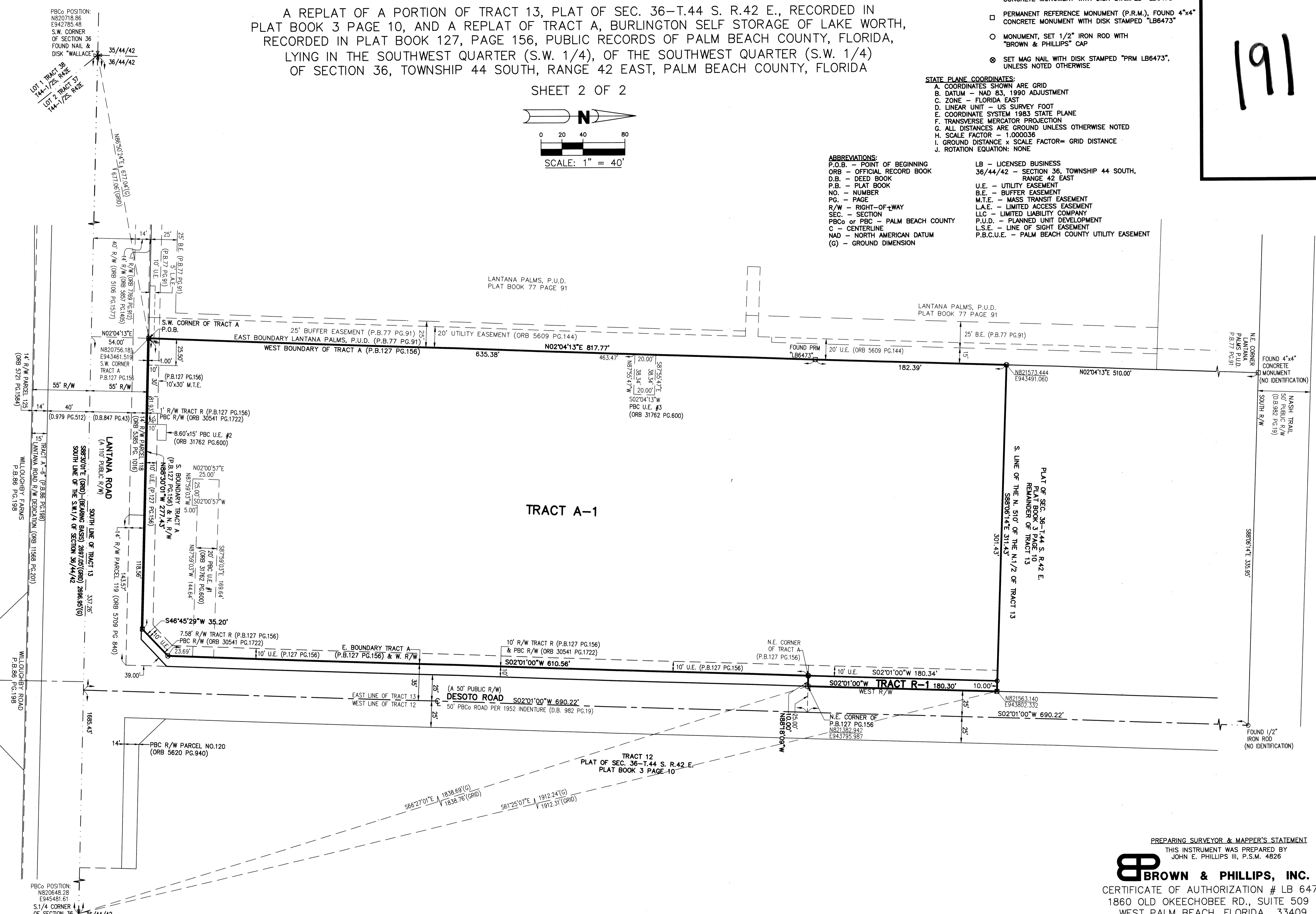
- A. COORDINATES SHOWN ARE GRID
- B. DATUM - NAD 83, 1990 ADJUSTMENT
- C. ZONE - FLORIDA EAST
- D. LINEAR UNIT - US SURVEY FOOT
- E. COORDINATE SYSTEM 1983 STATE PLANE
- F. TRANSVERSE MERCATOR PROJECTION
- G. ALL DISTANCES ARE GROUND UNLESS OTHERWISE NOTED
- H. SCALE FACTOR - 1.000036
- I. GROUND DISTANCE x SCALE FACTOR = GRID DISTANCE
- J. ROTATION EQUATION: NONE

ABBREVIATIONS:

- P.O.B. - POINT OF BEGINNING
- ORB - OFFICIAL RECORD BOOK
- D.B. - DEED BOOK
- P.B. - PLAT BOOK
- NO. - NUMBER
- PG. - PAGE
- R/W - RIGHT-OF-WAY
- SEC. - SECTION
- PBC or PBC - PALM BEACH COUNTY
- C - CENTERLINE
- NAD - NORTH AMERICAN DATUM
- (G) - GROUND DIMENSION

LB - LICENSED BUSINESS

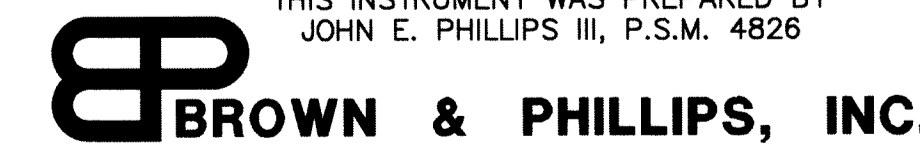
- 36/44/42 - SECTION 36, TOWNSHIP 44 SOUTH, RANGE 42 EAST
- U.E. - UTILITY EASEMENT
- B.E. - BUFFER EASEMENT
- M.T.E. - MASS TRANSIT EASEMENT
- L.A.E. - LIMITED ACCESS EASEMENT
- LLC - LIMITED LIABILITY COMPANY
- P.U.D. - PLANNED UNIT DEVELOPMENT
- L.S.E. - LINE OF SIGHT EASEMENT
- P.B.C.U.E. - PALM BEACH COUNTY UTILITY EASEMENT



191

PREPARING SURVEYOR & MAPPER'S STATEMENT

THIS INSTRUMENT WAS PREPARED BY JOHN E. PHILLIPS III, P.S.M. 4826



CERTIFICATE OF AUTHORIZATION # LB 6473
1860 OLD OKEECHOBEE RD., SUITE 509
WEST PALM BEACH, FLORIDA 33409
561-615-3988, 615-3986 FAX

PBCo POSITION:
N820718.86
E942785.48
S.W. CORNER
OF SECTION 36
FOUND NAIL &
DISK "WALLACE"

PBCo POSITION:
N820648.28
E945481.61
S.1/4 CORNER
OF SECTION 36
(NOT FOUND)